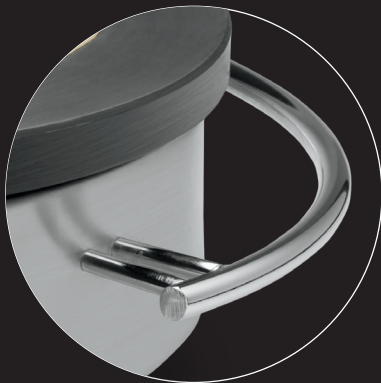


**WARING**  
COMMERCIAL®

# ELECTRIC CRÊPE MAKER



Adjustable thermostat to 570°.



Heat-resistant carrying handles.

- Large 16" cast-iron cooking surface
- Durable stainless steel base with heat-resistant carrying handles
- Adjustable thermostat to 570°
- Power and Ready indicator lights
- 120V, 1800W
- Limited One Year Warranty

**Improved Even  
Heat Distribution**

**Added Value:**

**Batter Spreader and Spatula Included**



WSC160X/WSC165X





# ELECTRIC CREPE MAKER

Large 16" cast-iron cooking surface

Power and ready indicator lights

Adjustable thermostat to 570° F

Heat resistant handles stay cool during extended periods of use

**Added Value:  
Batter Spreader and  
Spatula Included**



| ITEM     | ELECTRICAL                          | LISTINGS   | OUT OF BOX DIMENSIONS<br>L x W x H | CORD LENGTH | WARRANTY         |
|----------|-------------------------------------|------------|------------------------------------|-------------|------------------|
| WSC160X  | 120 VAC, 60Hz, 1800W, 5-15          | cULus, NSF | 22" x 22" x 5.5"                   | 3 Feet      | Limited One Year |
| WSC165BX | 208/240 VAC, 60Hz, 2170/2880W, 6-15 | cULus, NSF | 22" x 22" x 5.5"                   | 3 Feet      | Limited One Year |

| ORDERING INFO<br>INFORMATION | #STD. PKG. | GIFTBOX WEIGHT (LBS.) | CUBIC FEET | UPC          |
|------------------------------|------------|-----------------------|------------|--------------|
| WSC160X                      | 1          | 46.92                 | 1.62       | 040072069895 |
| WSC165BX                     | 1          | 46.92                 | 1.62       | 040072069925 |
| CAC107 – Batter Spreader     | 48         | 3.64                  | 4.43       | 040072016936 |
| CAC108 – Spatula             | 48         | 3.59                  | 1.08       | 040072016943 |



@waringcommercial

waringcommercialproducts.com



©2020 Waring Commercial  
314 Ella T. Grasso Avenue  
Torrington, CT 06790  
Tel. 800-492-7464  
Fax 860-496-9008

20WC076117- 10/20