

# NPT-48SA-4D

## REFRIGERATED SALAD/SANDWICH PREP TABLE

Ideal for restaurants, cafeterias & food processing spaces

**NEW AIR**



## FEATURES

Stainless steel interior and exterior

Rear digital controller

Back mounted compressor

Clear plastic 1/6 pans included

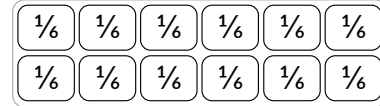
14.5" deep cutting board



# SPECIFICATIONS

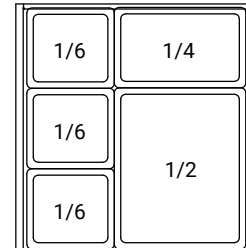
Capacity (Cu. ft)	11.4
Capacity (Liters)	324.79 L
Exterior Dimensions (in)	48 1/4" x 33 1/8" x 45 3/4"
Package Dimensions (in)	52 1/2" x 35 7/8" x 48 3/8"
Net Weight (kg/lbs)	104.8 kg / 231 lbs
Drawers	4
Temperature Range (°C)	0.5 TO 5°C
Ambiant Temperature	25°C
Ambiant Humidity	55%
Refrigerant (CFC-Free)	R290
Amperage (A)	2.4 A
Voltage (V)	115V / 60Hz
Plug Type	NEMA 5-15P

## Countertop storage

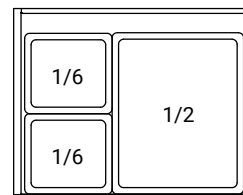


12 x 1/6 Pans

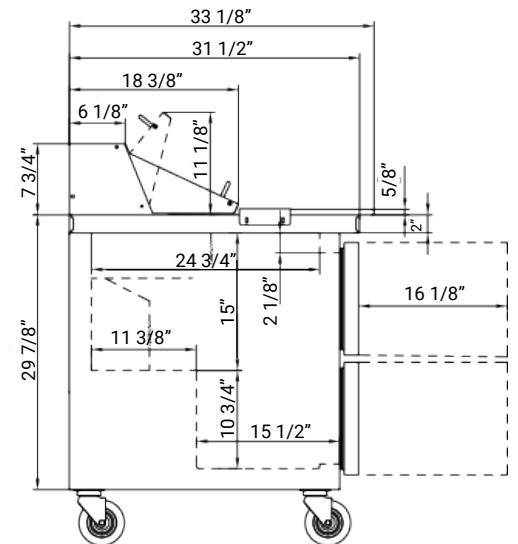
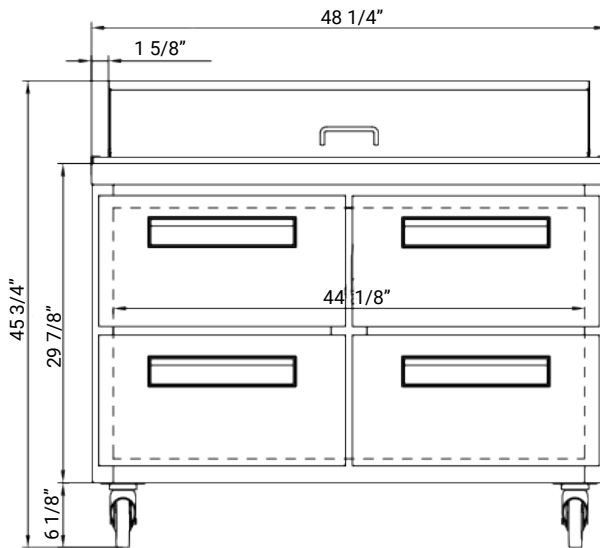
## Top Drawers



## Bottom Drawers



NEMA 5-15P



\*Design and specifications may change without prior notice for product improvement

CUSTOMER SUPPORT



1-800-567-3620



NEWAIRREFRIGERATION.CA

