



**"WE MAKE THE KITCHEN BETTER!"**

**ATOSA USA, INC.**

**Toll Free: 855-855-0399 Email: info@atosausa.com**

www.atosa.com | www.atosausa.com

California, Colorado, Florida, Georgia, Illinois,

New Jersey, Ohio, Texas, Washington

# Worktop Refrigerators & Freezers with Drawers & Backsplash

**MODELS:**  
AWR27D2 / AWR36D2 / AWR48D4  
AWF27D2 / AWF36D2 / AWF48D4

## Standard Features

- Stainless steel exterior & interior with reinforced stainless steel top
- Environmentally friendly R290 refrigerant
- Electronic temperature controller
- Refrigerators maintain temperatures between 35°F – 38°F
- Freezers maintain temperatures between -8°F – 1°F
- Recessed door handle(s)
- Magnetic drawer gasket(s)
- 1 full size (12" x 20") 6" deep pan per drawer standard
- Each drawer can accommodate 6 - 1/6 size pans
- Pre-installed casters

## Optional Accessories

- Extended warranty up to 5 years

For the best results of food preservation we recommend setting your refrigerator between 35°F to 38 °F

1. Don't forget to leave the unit some room to breathe!
2. Please clean the condenser frequently to give the unit more fresh air.



**AWR27D2 / AWF27D2**



**AWR36D2 / AWF36D2**



**AWR48D4 / AWF48D4**



2 YEAR PARTS AND LABOR WARRANTY  
5 YEAR COMPRESSOR PART WARRANTY





**"WE MAKE THE KITCHEN BETTER!"**

**ATOSA USA, INC.**

**Toll Free: 855-855-0399 Email: info@atosausa.com**

www.atosa.com | www.atosausa.com

California, Colorado, Florida, Georgia, Illinois,

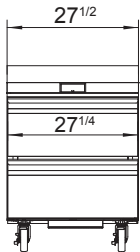
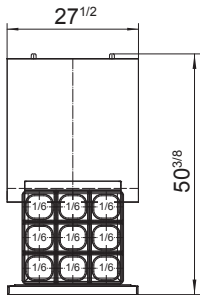
New Jersey, Ohio, Texas, Washington

**SPECIFICATIONS**

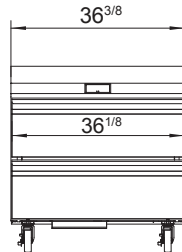
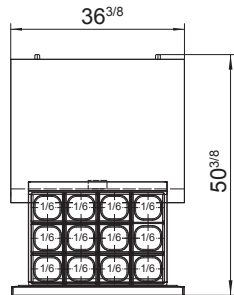
Models	Drawers	Capacity (Cu.Ft.)	Casters (inch)	Amps (A)	Voltage (V/Hz/Ph)	HP	Refrigerant	Exterior Dimensions (inch)	Net Weight (lb)	Gross Weight (lb)
AWR27D2	2	6.53	5	3.4	115/60/1	1/7+	R290	27 <sup>1/2</sup> ×30×38 <sup>7/8</sup>	143	198
AWF27D2	2	6.53	5	3.4	115/60/1	1/7+	R290	27 <sup>1/2</sup> ×30×38 <sup>7/8</sup>	143	198
AWR36D2	2	8.97	5	3.4	115/60/1	1/7+	R290	36 <sup>3/8</sup> ×30×38 <sup>7/8</sup>	172	236
AWF36D2	2	8.97	5	4.8	115/60/1	1/4+	R290	36 <sup>3/8</sup> ×30×38 <sup>7/8</sup>	172	236
AWR48D4	4	12.22	5	3.4	115/60/1	1/7+	R290	48 <sup>1/4</sup> ×30×38 <sup>7/8</sup>	201	278
AWF48D4	4	12.22	5	4.8	115/60/1	1/4+	R290	48 <sup>1/4</sup> ×30×38 <sup>7/8</sup>	201	278

**PLAN VIEW**

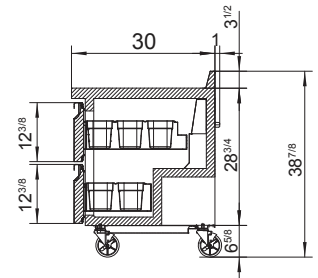
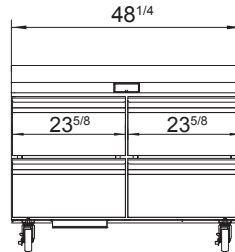
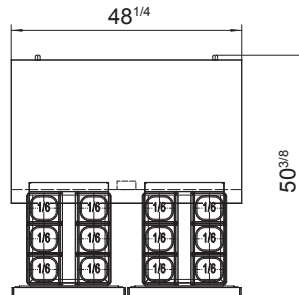
AWR27D2 / AWF27D2



AWR36D2 / AWF36D2



AWR48D4 / AWF48D4



**SIDE VIEW**

Casters



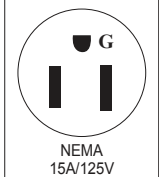
Rear grate



Temperature control



**NEMA 5-15P**



NEMA 15A/125V