



"WE MAKE THE KITCHEN BETTER!"

ATOSA USA, INC.

Toll Free: 855-855-0399 Email: info@atosausa.com

www.atosa.com | www.atosausa.com

California, Colorado, Florida, Georgia, Illinois,

New Jersey, Ohio, Texas, Washington

Worktop Refrigerators & Freezers with Backsplash

Standard Features

- Stainless steel exterior & interior with reinforced stainless steel top with foamed in place backsplash
- Environmentally friendly R290 refrigerant
- Electronic temperature controller
- Refrigerators maintain temperatures between 35°F – 38°F
- Freezers maintain temperatures between -8°F – 0°F
- Field reversible door(s)
- Self-closing door(s) with stay open feature
- Magnetic door gasket(s) standard for positive door seal
- Pre-installed casters
- One (1) pre-installed shelf per section

Optional Accessories

- Extended warranty up to 5 years

For the best results of food preservation we recommend setting your refrigerator between 35°F to 38 °F

1. Don't forget to leave the unit some room to breathe!
2. Please clean the condenser frequently to give the unit more fresh air.



2 YEAR PARTS AND LABOR WARRANTY
5 YEAR COMPRESSOR PART WARRANTY

MODELS:

**AWR27SD / AWR36SD / AWR48SD / AWR60SD / AWR72SD
AWF27SD / AWF36SD / AWF48SD / AWF60SD**



AWR27SD / AWF27SD



AWR36SD / AWF36SD



AWR48SD / AWF48SD



AWR60SD / AWF60SD



AWR72SD





"WE MAKE THE KITCHEN BETTER!"

ATOSA USA, INC.

Toll Free: 855-855-0399 Email: info@atosausa.com

www.atosa.com | www.atosausa.com

California, Colorado, Florida, Georgia, Illinois,

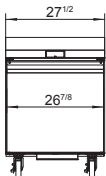
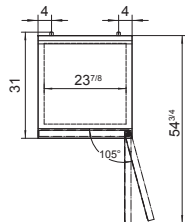
New Jersey, Ohio, Texas, Washington

SPECIFICATIONS

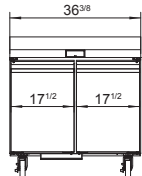
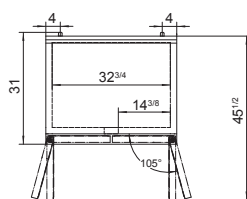
| Models | Door | Capacity (Cu.Ft.) | Shelves | Casters (inch) | Amps (A) | Voltage (V/Hz/Ph) | HP | Refrigerant | Exterior Dimensions (inch) | Net Weight (lb) | Gross Weight (lb) |
|---------|------|-------------------|---------|----------------|----------|-------------------|------|-------------|---|-----------------|-------------------|
| AWR27SD | 1 | 6.53 | 2 | 5 | 3.4 | 115/60/1 | 1/7+ | R290 | 27 ^{1/2} ×30×38 ^{7/8} | 143 | 198 |
| AWF27SD | 1 | 6.53 | 2 | 5 | 3.9 | 115/60/1 | 1/5 | R290 | 27 ^{1/2} ×30×38 ^{7/8} | 143 | 198 |
| AWR36SD | 2 | 8.97 | 4 | 5 | 3.4 | 115/60/1 | 1/7+ | R290 | 36 ^{3/8} ×30×38 ^{7/8} | 172 | 236 |
| AWF36SD | 2 | 8.97 | 4 | 5 | 4.8 | 115/60/1 | 1/4+ | R290 | 36 ^{3/8} ×30×38 ^{7/8} | 172 | 236 |
| AWR48SD | 2 | 12.22 | 4 | 5 | 3.4 | 115/60/1 | 1/7+ | R290 | 48 ^{1/4} ×30×38 ^{7/8} | 201 | 278 |
| AWF48SD | 2 | 12.22 | 4 | 5 | 4.8 | 115/60/1 | 1/4+ | R290 | 48 ^{1/4} ×30×38 ^{7/8} | 201 | 278 |
| AWR60SD | 2 | 15.5 | 4 | 5 | 3.9 | 115/60/1 | 1/5 | R290 | 60 ^{1/4} ×30×38 ^{7/8} | 227 | 324 |
| AWF60SD | 2 | 15.5 | 4 | 5 | 4.8 | 115/60/1 | 1/4+ | R290 | 60 ^{1/4} ×30×38 ^{7/8} | 227 | 324 |
| AWR72SD | 3 | 18.89 | 6 | 5 | 3.9 | 115/60/1 | 1/5 | R290 | 72 ^{5/8} ×30×38 ^{7/8} | 258 | 370 |

PLAN VIEW

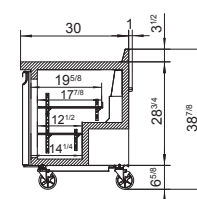
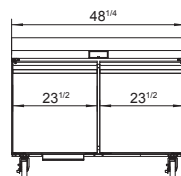
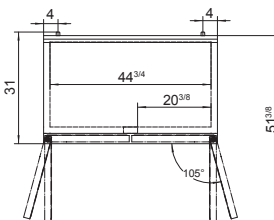
AWR27SD/AWF27SD



AWR36SD / AWF36SD

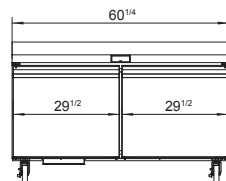
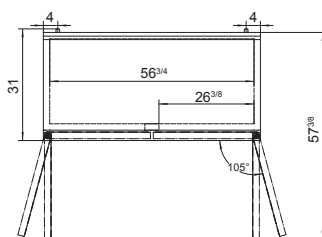


AWR48SD / AWF48SD

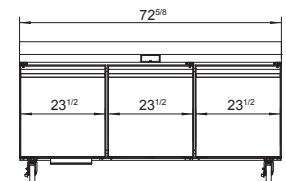
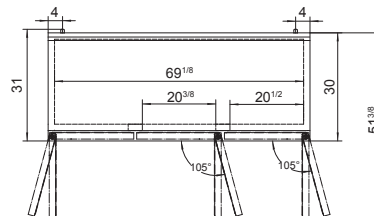


SIDE VIEW

AWR60SD / AWF60SD



AWR72SD



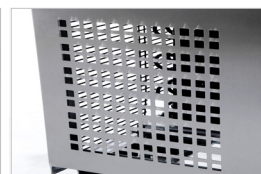
Casters



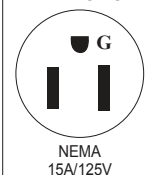
Epoxy shelves



Rear grate



NEMA 5-15P



NEMA
15A/125V